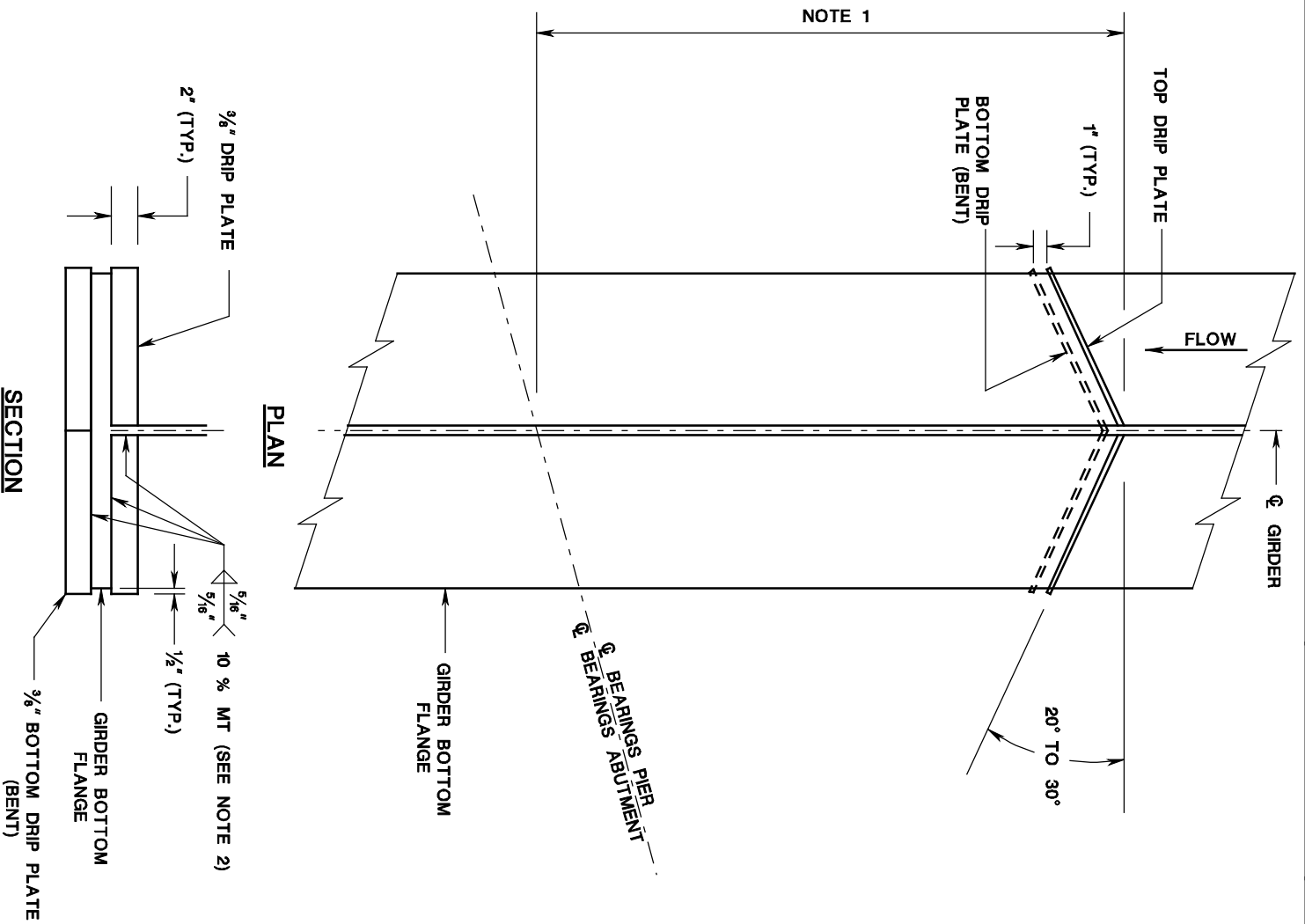


# DRIP PLATE DETAIL FOR WEATHERING STEEL

ISSUED: 2009

PLATE  
3.9-23



## NOTES:

1. DRIP PLATES SHALL BE LOCATED AT A DISTANCE THAT ENSURES NO RUNOFF ON SUBSTRUCTURE.
2. THE DRIP PLATES SHALL BE CLIPPED TO CLEAR THE WEB/FLANGE WELD.